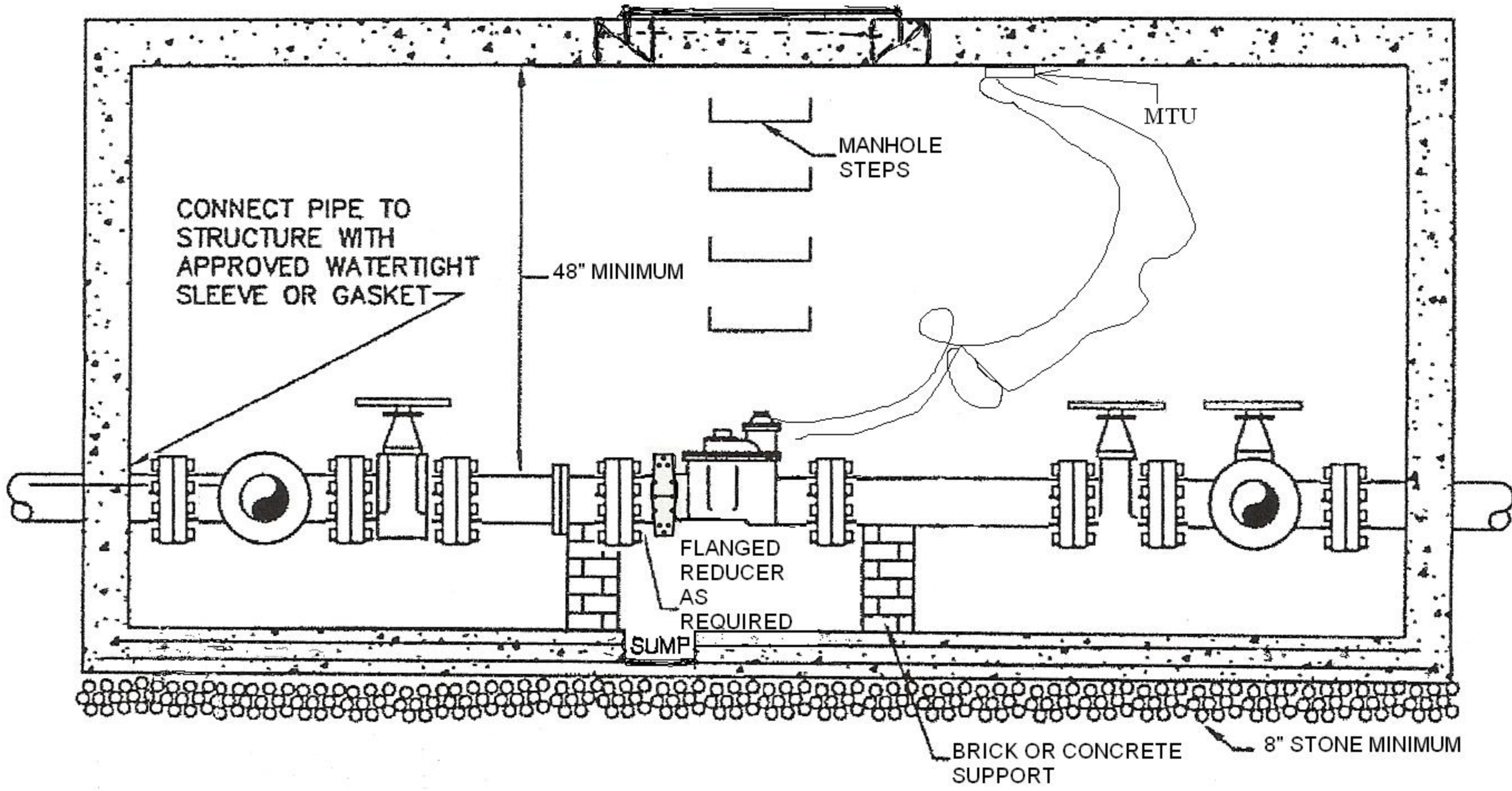


PLAN

ACCESS HATCH TO BE ALIGNED WITH STEPS; HATCH TO BE PENN INSERT OR APPROVED EQUAL



ATLANTIC CITY
MUNICIPAL UTILITIES AUTHORITY
401 NORTH VIRGINIA AVENUE
PO BOX 117
ATLANIC CITY, NJ 08404-0117

PRECAST VAULT
COMPOUND METER WITH BYPASS METER
AND MTU

DESIGN GUIDE

FEB 2008
APPROVED BY:
MIKE MEGELLA